



CARIBBEAN BASINS, TECTONICS AND HYDROCARBONS, PHASE II

Institute for Geophysics
The University of Texas at Austin

<http://www.ig.utexas.edu/research/projects/cbth/>

21 October 2008

Editor: Lisa Bingham (lisaw@ig.utexas.edu)

Vol. 4. No. 1

In this Issue

Greeting	1
Special Thanks to Year-End Meeting Attendees	2
Additions to the CBTH Research Team.....	2
Meet our Company Contacts.....	2
CBTH Software Support	3
Past Meetings and Events	4
Progress and Upcoming Information.....	4
Upcoming Meetings	4
Contact Information.....	5

Greeting

In this edition of the CBTH Newsletter, we provide an update on our completed activities from May 2008 and an overview of our activities in the closing months of year three of the study. We hope you are becoming better acquainted with the GIS database and website and that this information is assisting your exploration efforts in the Phase I study area. It's gratifying to us to hear feedback on the database and other information we are providing you. Keep those comments and questions coming in!

If you are not a member and are interested in participating in the CBTH consortium, we encourage you to take a minute to review our website (www.ig.utexas.edu/research/projects/cbth) where you can also download our project proposal, demos, and previous newsletters. Please feel free to contact us at cbth@ig.utexas.edu.

End of CBTH Phase I.

During Phase I, we collected, digitized and georeferenced:

- 216 cross sections
- 70 outcrops
- 677 seismic lines
- 377 wells
- 28 stratigraphic columns

These data were delivered in shapefile format over the three-year study period. The final release included each of

these data with an image in geodatabase format for ArcGIS 9.2.

Other data delivered include:

- 13 dissertations or theses
- 9 peer-reviewed publications
- 25 AAPG presentations
- 14 AGU presentations
- 5 GSTT or GSA presentations
- 3 CBTH atlases
- 3 CBTH year-end presentations
- 2 field trip guides
- 1 database-website manual for CBTH
- 1 condensed short course on the Caribbean
- 49 SEGY and navigation files
- 9 animations
- Reference lists take up 6 MB of storage space

Deliveries combined for a total of 49 GB.

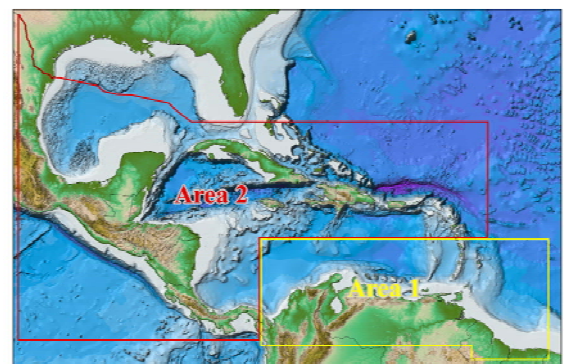


Figure 1. Area 1 outlined in yellow. Area 2 outlined in red. Phase I focused only on Area 1. Phase II includes both areas 1 and 2.

Phase II of CBTH began 01 September 2008.

We thank our sponsors for continued support. Phase II will build and expand upon the results of Phase I.

CARIBBEAN BASINS, TECTONICS AND HYDROCARBONS, PHASE II

Institute for Geophysics

The University of Texas at Austin

<http://www.ig.utexas.edu/research/projects/cbth>

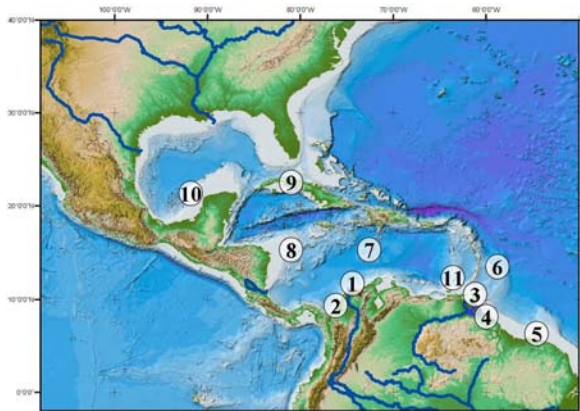


Figure 2. Focus areas for Phase II.

The focus areas of Phase II are:

1. Magdalena delta: Alejandro Escalona will head this portion at the University of Stavanger (UiS).
2. Colombian margin, Magdalena delta to Panama): Paul Mann will head this portion at the University of Texas Institute for Geophysics (UTIG).
3. East Coast and NCMA Trinidad: UTIG
4. Orinoco delta framework: UTIG
5. Suriname-Guyana margin: UiS
6. Barbados area: UiS
7. PaleoGIS™ plate reconstructions: UiS & UTIG
8. Nicaraguan rise: UTIG
9. Cuban offshore basins: UiS
10. Southern Gulf of Mexico: UTIG
11. Basin modeling of the SE Caribbean and Colombia: UiS

Special Thanks to Year-End Meeting Attendees

John Ceron—Ecopetrol
Hugo Belotti—Petrobras
Nigel Cross—BG
Roberto Hernandez—Ecopetrol
Alice Hildick—ExxonMobil
Ron Johnson—ExxonMobil
Bruno Maldonado—Newfield
John Reistroffer—ExxonMobil
Louglin Quinn—Chevron
Karen Tindale—BHP Billiton
Fernando Sanchez-Ferrer—Shell
Terry Todd—Newfield

Additions to the CBTH Research Team

Thanks to the funding support of our sponsors, the CBTH research team is growing.

Stefan Punnette and Gustavo Taboada are working on MS theses at UT. Stefan's study will focus on the North Coast Marine area of Trinidad and Gustavo's study will focus on the Orinoco delta.

To learn more about Stefan, visit his website:

<http://www.ig.utexas.edu/people/students/stefan/>

To learn more about Gustavo, visit his website:

<http://www.ig.utexas.edu/people/students/taboadag/>

Since we are part of a major university, some of the research "products" that you are supporting with your annual payments are trained geoscientists at levels ranging from undergraduate through post-doctoral. Please let us know if you would like to support any of our personnel as summer interns or permanent employees at your company.

Meet our Company Contacts

The following people volunteered to serve as our main contacts for CBTH. All data generated by CBTH is provided to the sponsoring companies through these individuals. Please let us know if your company representative changes over the three-year course of this study. In order to better track deliveries, we send a packing slip with all CBTH data shipments. The contact signs and returns the form to us by fax or mail. In this way, we have documentation of the person and time that CBTH data was received at the company. The contact person also acts to disseminate our products to other people in their respective companies as well as representing the company at our annual meetings. We greatly appreciate the extra efforts by the contacts for the CBTH project!

**BHP Billiton
Petroleum, Inc.**

Karen Tindale
karen.tindale@bhpbilliton.com
Houston, Texas



CARIBBEAN BASINS, TECTONICS AND HYDROCARBONS, PHASE II

Institute for Geophysics

The University of Texas at Austin

<http://www.ig.utexas.edu/research/projects/cbth>

British Gas T&T Limited

Stephen Babb
steve.babb@bg-group.com
Port-of-Spain, Trinidad



Shell

Fernando Sanchez-Ferrer
f.sanchez-ferrer@shell.com
Houston, Texas



Chevron

Richard Parrish
rparrish@chevron.com
Houston, Texas



StatoilHydro

Frode Liestøl
frli@statoilhydro.com

StatoilHydro

Ecopetrol

Roberto Hernandez
Roberto.Hernandez
@ecopetrol.com.co
Bogota, Colombia



CBTH Software Support

Landmark Graphics

Bill Agee
bagee@lgc.com

Landmark

Landmark Graphics is kindly providing our interpretative software.

ExxonMobil Exploration Company

Pinar Yilmaz
pinar.o.yilmaz@exxonmobil.com
Houston, Texas



IVS3D

Bill McKernan
bmkernan@ivs3d.com



We also use an exciting visualization package called Fledermaus from IVS3D. We're using it to create interactive "flyovers" that combine topography, bathymetry, surface geology and seismic reflection profiles. These flyovers make excellent presentation tools to show the tectonic and stratigraphic setting of a detailed prospect area.

Newfield Exploration

Bruno Maldonado
bmaldonado@newfld.com
Houston, Texas



Petrobrás

Hugo Belotti
hugo.belotti@petrobras.com.br
Rio de Janeiro, Brazil



PDVSA

Miguel Nuñez
nunezmf@pdvsa.com
Puerto la Cruz, Venezuela



Repsol

Raul Giraudo
rgiraudo@repsolypf.com
The Woodlands, Texas



Zetaware Genesis

Zhiyong He
zhe@zetaware.com



Zetaware has generously provided CBTH with two copies of Genesis which is their basin modeling package. We have been experimenting with its many uses and display options. We are using the software to generate our subsidence plots for individual wells that reach basement. If you would like to find out more about how you can obtain this software, please contact Zhiyong He at the above email address.

CARIBBEAN BASINS, TECTONICS AND HYDROCARBONS, PHASE II

Institute for Geophysics

The University of Texas at Austin

<http://www.ig.utexas.edu/research/projects/cbth>

PaleoGIS

Arwen Vaughan
paleogis@rothwellgroup.com



CBTH and PLATES have just acquired a license for the plate reconstruction program PaleoGIS. Using this software, CBTH will be working with Ian Norton of the PLATES project at UTIG to improve our plate reconstructions of the Caribbean.

Past Meetings and Events

CBTH Year End Meeting

Twelve sponsor representatives attended our year-end meeting in Austin, Texas on October 3rd. CBTH staff summarized findings for Phase I and presented an overview of Phase II data distribution.

Data Distribution

Theses, Dissertations and Other Documents

http://www.ig.utexas.edu/research/projects/cbth/SponsorsOnly/thes_diss.htm

David Contreras

MS thesis—Defining the northeastern boundary of the supergiant Maracaibo foreland basin, Venezuela

Hornbach et al.

Did a submarine slide trigger the 1918 Puerto Rico tsunami?

IG 2904 SEG Y for select lines

PDF of 2008 Atlas

2008 Meeting Presentations

Movies

<http://www.ig.utexas.edu/research/projects/cbth/SponsorsOnly/movies.htm>

CBTH Atlas 2008 Surfaces in Fledermaus format

Venmar

<http://www.ig.utexas.edu/research/projects/cbth/SponsorsOnly/VenmarHtml/GIS/2008/>

2008 GIS database and website update to include Colombia, central Venezuela, Surinam, and Guyana

GIS for 2008 Atlas

<http://www.ig.utexas.edu/research/projects/cbth/SponsorsOnly/VenmarHtml/GIS/Grids/>

2007 Petrel project of Phase I structure and isochron grids and fault polygons

ArcGIS rasters of Phase I structure grids

Future Publications & Upcoming Events

The CBTH research group plans to submit several abstracts to the 2009 AAPG annual meeting in Denver, CO. When abstracts have been confirmed, we will update our website and list them in the next newsletter.

Upcoming Meetings

Keep an eye on our website for updates and more information for these upcoming events.

www.ig.utexas.edu/research/projects/cbth/links.htm

American Geophysical Union Annual Meeting

December, 2008
San Francisco, CA

American Association of Petroleum Geologists Annual Meeting

June 7-10, 2009
Denver, CO

CBTH Year 4 Meeting

September 04, 2009 (tentatively)
Austin, TX



CARIBBEAN BASINS, TECTONICS AND HYDROCARBONS, PHASE II

Institute for Geophysics

The University of Texas at Austin

<http://www.ig.utexas.edu/research/projects/cbth>

Contact Information

Paul Mann

paulm@ig.utexas.edu

Alejandro Escalona

alejandro.escalona@uis.no

Lisa Bingham

(GIS, database, billing questions or other questions
and information)

cbth@ig.utexas.edu

Our Mailing Address is:

Dr. Paul Mann
CBTH Project
Institute for Geophysics
The University of Texas at Austin
Pickle Research Campus
10100 Burnet Road, Bldg. 196
Austin, TX 78758-4445 U.S.A.