

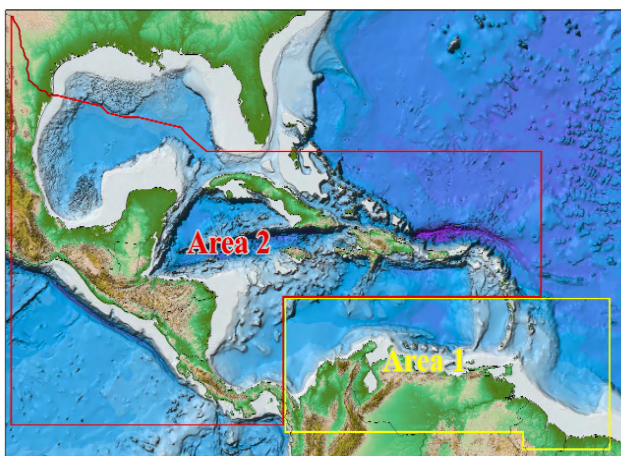
IN THIS ISSUE

Additions to the CBTH Research Team	1
Meet Our Sponsor Contacts	2
CBTH Software Support	3
Past Meetings and Events	3
Sponsor Visits	4
Data Distribution	4
More News	4
Upcoming Meetings	5
Contact Information	5

GREETING

In this edition of the CBTH Newsletter, we will provide an update on our completed activities from January 2008 and an overview of our activities in the closing months of year three of the study. We hope you are becoming better acquainted with the GIS database and website and that this information is assisting your exploration efforts in the Phase I study area. It's gratifying to us to hear feedback on the database and other information we are providing you. Keep those comments and questions coming in!

Figure 1. Area 1 outlined in yellow. Area 2 outlined in red. Phase I focused only on Area 1. Phase II will include both Areas 1 and 2.



If you are not a member and are interested in participating in the CBTH consortium, we encourage you to take a minute to review our website (www.ig.utexas.edu/research/projects/cbth/)

where you can also download our project proposal, demos and previous newsletters. Please contact us at any time at cbth@ig.utexas.edu.

Phase I of CBTH will be completed 31 August 2008. Contracts and invoices have been sent to participating and interested companies. Phase II will begin 01 September 2008. We hope you will continue funding our efforts to make a synthesis of the available data.

ADDITIONS TO THE CBTH RESEARCH TEAM

Thanks to the funding support of our sponsors, the CBTH research team is growing.

Sanchi Srivastava is a new undergraduate research assistant for CBTH. She began working with us in March. Sanchi is a UT computer sciences major and helps with the scanning and organizing of our digital database.

To learn more about Sanchi, visit her website:

<http://www.ig.utexas.edu/people/students/sanchi/>

Since we are part of the University of Texas at Austin, some of the research "products" that you support with your annual payments are trained geoscientists at levels ranging from undergraduate through post-doctoral. Please let us know if you would like to support any of our personnel as summer interns or permanent employees at your company.

MEET OUR SPONSOR CONTACTS

The following people have volunteered to serve as our main contacts for CBTH. All data generated by CBTH is provided to the sponsoring companies through these individuals. Please let us know if your company representative changes over the three-year course of this study. In order to better track deliveries, we send a packing slip with all CBTH data shipments. The contact signs and returns the form to us by fax or mail. In this way, we have documentation of the person and time that CBTH data was received at the

company. The contact person also acts to disseminate our products to other people in their respective companies along with representing the company at our annual meetings. We greatly appreciate all the extra efforts by these people for the CBTH project!

**BHP Billiton
Petroleum, Inc.**

Karen Tindale
karen.tindale@bhpbilliton.com
Houston, Texas



British Gas T&T Limited

Stephen Babb
steve.babb@bg-group.com
Port-of-Spain, Trinidad



**British Petroleum Trinidad and
Tobago**

Randy Partap
Randy.Partap@bp.com
Port-of-Spain, Trinidad



Chevron

Richard Parrish
rparrish@chevron.com
Houston, Texas



**ExxonMobil
Exploration
Company**

Pinar Yilmaz
pinar.o.yilmaz@exxonmobil.com
Houston, Texas



Newfield Exploration

Bruno Maldonado
bmaldonado@newfld.com
Houston, Texas



Petrobrás

Hugo Belotti
hugo.belotti@petrobras.com.br
Rio de Janeiro, Brazil



PDVSA

Miguel Nuñez
nunezmf@pdvsa.com
Puerto la Cruz, Venezuela



Repsol

Dewi Jones
djonesj@repsolypf.com
The Woodlands, Texas



Shell

Fernando Sanchez-Ferrer
f.sanchez-ferrer@shell.com
Houston, Texas



Talisman

Mark Godlewski
mgodlewski@talisman-energy.com
Calgary, Canada



CBTH SOFTWARE SUPPORT

Landmark Graphics

Bill Agee
bagee@lgc.com



Landmark Graphics is kindly providing our interpretative software.

IVS3D

Bill McKernan
bmkernan@ivs3d.com



We use an exciting visualization package called Fledermaus from IVS3D to create interactive “flyovers” that combine topography, bathymetry, surface geology and seismic reflection profiles. These flyovers make excellent presentation tools showing the tectonic and stratigraphic settings of a detailed prospect area.

**Zetaware
Genesis**

Zhiyong He
zhe@zetaware.com



Zetaware has generously provided CBTH with two copies of Genesis, their basin modeling package. We have been experimenting with its many uses and display options. We use the software to generate our subsidence plots for individual wells that reach basement.

PAST MEETINGS AND EVENTS

2008 Honduras Geological Seminar “Oil in Honduras: Focus on the Tela Basin.”

January 29, 2008
Houston, Texas

Paul Mann and Lisa Bingham gave presentations at this half-day meeting on oil prospects in Honduras. Paul spoke on the geology and oil potential for the area while Lisa covered the creation and upkeep of the CBTH database. Industry interest in the offshore area of Honduras (Nicaraguan Rise) and some onland areas is increasing.

III Oil and Gas Investment Conference

February 3-8, 2008
Cartagena, Colombia

Lisa Bingham attended the Oil and Gas conference in Cartagena, Colombia. She visited with many sponsors and potential sponsors.

18th Caribbean Geological Conference

March 23-29, 2008
Santo Domingo, Dominican Republic

Paul Mann co-lead a pre-meeting field trip (“Tectonics and petroleum geology of the Dominican Republic”, March 23-24, 2008) to the Enriquillo and Azua basins of the southern Dominican Republic as part of the 18th Caribbean Geological Conference in Santo Domingo, Dominican Republic. The field trip guide can be downloaded at:

http://www.ig.utexas.edu/research/projects/cbth/SponsorsOnly/thes_diss.htm

This guide contains a summary of past wells drilled on the islands of Hispaniola (Dominican Republic and Haiti).

ANH Roadshow

March 26, 2008
Houston, Texas

Lisa Bingham attended this half-day meeting where representatives of ANH presented on the upcoming oil bid rounds in Colombia.

AAPG Annual Meeting

April 20-23, 2008
San Antonio, Texas

The entire CBTH research team and graduate students attended this meeting to present talks on CBTH-related work. Abstracts and presentations may be viewed online at:

<http://www.ig.utexas.edu/research/projects/cbth/SponsorsOnly/POSTERS/AAPG/aapg.htm>

Contreras et al.—Structural and stratigraphic correlations across the Burro Negro fault zone, northeastern margin of the Maracaibo supergiant basin.

Escalona et al.—Hydrocarbon exploration plays in the great Caribbean region and neighboring provinces.

Jiang et al.—Structure and stratigraphy of the Tobago-Barbados Ridge and its implications for hydrocarbons in the Barbados offshore area.

Vence et al.—Tectonic controls on Middle Eocene to recent stratigraphic sequences along the Guajira margin of northern Colombia.

Xie et al.—Paleogene Deep-water Sandstone Provenance and Reservoir Quality of Offshore Areas of Northern South America

SPONSOR VISITS

In April, Alejandro Escalona visited two companies in Europe to discuss potential sponsorship of CBTH.

In May, Paul Mann, Lisa Bingham, and Xiangyang Xie visited a company in Houston to discuss potential sponsorship of CBTH.

In May, Paul Mann and Lisa Bingham visited a sponsor in Houston.

<http://www.ig.utexas.edu/research/projects/cbth/SponsorsOnly/VenmarHtml/GIS/index.htm>

DATA DISTRIBUTION

Meeting Presentations

AAPG Presentations. All of the CBTH 2008 AAPG presentations are available for download at:

<http://www.ig.utexas.edu/research/projects/cbth/SponsorsOnly/POSTERS/AAPG/aapg.htm>

Theses, Dissertations and Other Documents

http://www.ig.utexas.edu/research/projects/cbth/SponsorsOnly/thes_diss.htm

Eleine Vence MS thesis - Subsurface structure, stratigraphy, and regional tectonic controls of the Guajira margin of northern Colombia

Field trip guide "Stratigraphy, tectonics and subsurface petroleum geology of the Ocoa, Azua and Enriquillo basins, Dominican Republic"

Venmar

Four maps have been added to Venmar.

<http://www.ig.utexas.edu/research/projects/cbth/SponsorsOnly/VenmarHtml/maps/index.htm>

Geological map of Guyana

Mineral exploration map of Guyana

Geological maps of northern and southern Suriname

We have included text versions of our Endnote libraries.

<http://www.ig.utexas.edu/research/projects/cbth/SponsorsOnly/References/index.htm>

We have created a data directory so that you may search on a keyword and find all of the documents in the CBTH database that match your query. You can download it at:

MORE NEWS

Paul Mann received the UT Jackson School of Geosciences outstanding research award for his extensive and influential work in the Caribbean.

Alejandro Escalona received the prestigious J.C. "Cam" Sproule award at the AAPG meeting in San Antonio. This award is reserved for excellent research published before the age of 35. The publication was derived from Alejandro's Ph.D. research conducted at the University of Texas at Austin.

David Contreras received the best student poster award at the AAPG meeting in San Antonio for his research on the Burro Negro fault in the Maracaibo area. He will finish his Master's thesis for August 2008 graduation. After his graduation, he will return to Venezuela to work with PDVSA.

Eleine Vence completed her thesis on the offshore Guajira margin of Colombia. Eleine begins working for ConocoPhillips this summer. She is now preparing both chapters of the thesis for submission to journals.

Paul Mann and Lisa Bingham will spend part of the summer in Norway working with Alejandro Escalona at the University of Stavanger on the CBTH project. Alejandro is an associate professor teaching courses in subsurface petroleum geology. He is completing a new training facility and computer lab that were funded by NorskHydro.

UPCOMING MEETINGS

Keep an eye on our website for updates and more information for these upcoming events.

www.ig.utexas.edu/research/projects/cbth/links.htm

International Geological Congress

August 6-14, 2008
Oslo, Norway

Alejandro Escalona will be attending this meeting and co-chairing a session "Stress/strain partitioning in active orogens, with emphasis on geomorphic/geologic signature of bounding blind thrust faults."

CBTH Year 3 Year-End Meeting

October 3, 2008
Austin, Texas

Join us for the last meeting of Phase I in Austin. We will be summarizing our results for Year 3 and share our plans for Phase II. Download the agenda at:

<http://www.ig.utexas.edu/research/projects/cbth/SponsorsOnly/index.htm>

CONTACT INFORMATION

Paul Mann
512-471-0452
paulm@ig.utexas.edu

Alejandro Escalona
alejandro.escalona@uis.no

Lisa Bingham
512-471-0324
cbth@ig.utexas.edu

GIS, Database, billing questions, and general information